

# The Obligate

Maine Association of Wetland Scientists

c/o Dale Knapp, Stantec, 30 Park Drive, Topsham, ME 04086

American bittern artwork copyright 1991 by Nancy Derey

## President's Message

by Dale Knapp

**W**ell, now comes the time to reflect on my tenure of the leader of this great organization. First I want to take another opportunity in a public forum to praise the accomplishments of the dedicated individuals who make up the Executive Committee and populate our very important committees.

One of the main goals for the 2010 year was to bring in new members and also see if we could bring some prodigal members back into the fold. We set a lofty goal of an increase of 20%. By the time you read this we have 19 new members, and had 11 members who did not pay dues the previous year come back into the fold. Compared with our membership number in 2009, these new members represent a 17% increase. We didn't hit 20% but I think we should all feel good about that number.

Another key area of focus was to create a more visible organization providing comment related to policy. There have been strides made by the legislative

subcommittee and there is more work to come. It is never too late to get involved and the more active the membership can be the greater our impact on the outcome. Looking back on this year it was really the dedication of the EC that made this organization move forward. The work of the Vernal Pool Technical Committee is really something they should be proud of. We are still leaders within New England at having an active association that really means something.

I want to thank the team for putting up with my occasionally overzealous ideas and initiatives and their truly tireless dedication. I suppose unfortunately for them, I will be sticking around for another year as the outgoing prez. I also want to wish our incoming President, Jeff Simmons, the best for his tenure. Jeff is approachable, knowledgeable and generally just a good guy. I think he will face some pretty big challenges this year and will need our continued support to meet the goals he will move us toward. So with that I wish you all a prosperous 2011 and I look forward to seeing you all at the annual meeting. Thank you all for letting me have a turn holding the reigns. - DFK

## Botanical Briefing

by Laura Lapierre

The New England Wild Flower Society's *Flora Novae Angliae: A Manual for the Identification of native and Naturalized Higher Vascular Plants in New England* will be published in the late spring of 2011. This is exciting news for anyone interested in Maine and New England Flora, and is the culmination of many years of hard work. To promote this occasion the New England Wildflower Society (NEWFS) is offering a field workshop on August 20, 2011 with the author, Arthur Haines, along the Androscoggin River in Lisbon. Please go to [www.newenglandwild.org](http://www.newenglandwild.org) for more information on registering for what is sure to be

a fascinating and informative workshop.

In October the U.S. Army Corps of Engineers released the updated draft of the National Wetland Plant List and they are seeking comment. The plant list can be found at [http://wetland\\_plants.usace.army.mil/](http://wetland_plants.usace.army.mil/). The website is designed so that viewers may look up plants in their region and vote on species' indicator statuses. Navigate to the voting section from the home page by clicking on "PARTICIPATE IN THE NWPL UPDATE" on the left side of the screen. You will be prompted to register with a user name and password. From there you can provide the Corps with your feedback. All comments on the draft must be received by early March.

**DON'T FORGET TO LOG ON TO [WWW.MAINEWETLANDS.ORG](http://WWW.MAINEWETLANDS.ORG) AND SIGN UP FOR THE MAWS EMAIL LIST**

**Receive workshop and regulatory updates from the comfort of your inbox! Also, start or add to an ongoing online discussion group. Find us on [www.facebook.com/MAWS.org](http://WWW.FACEBOOK.COM/MAWS.ORG)**

## Legislative Committee Update

by Rodney Kelshaw

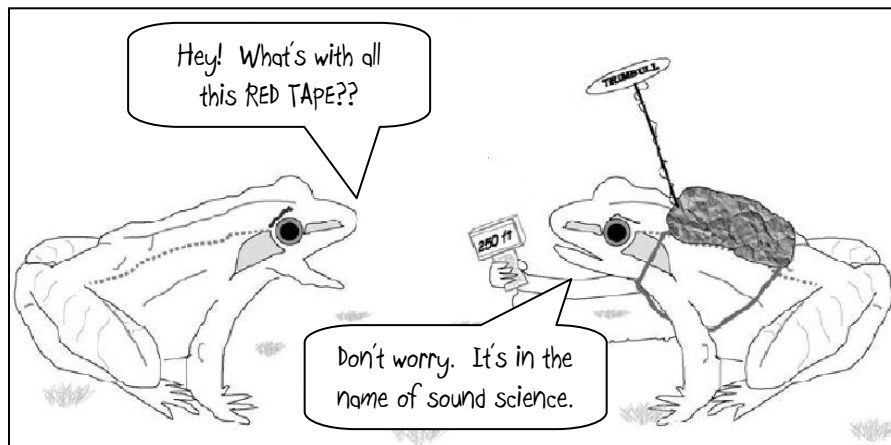
Another year has flown by and it is time for another update on the MAWS Legislative Subcommittee (LC). 2010 was my second year as the MAWS LC Chair. It has been a good opportunity for me to participate more with MAWS and to learn more about the process that develops the rules and laws that affect our profession. I know you are thinking that the reason I took this position was for the fortune and glory; and you are right. I have spent much of the year going to "A List" events and being schmoozed at the finest Dedham restaurants by high priced lawyers and powerful lobbyists. Not really, but over these years I have learned a lot. One of the first things I learned was that the "Legislative Committee" is somewhat of a misnomer. The committee has to keep track of more than bills in the State legislature. The LC has to stay current on proposed bills (LD) in several subcommittees in the Maine state legislature, proposed Rule making changes within the DEP, and federal law changes from the CORPS and EPA.

As everyone is most likely aware, the election in November resulted in a significant change in the political makeup of Augusta. We have our first Republican Governor since 1995 and the first republican lead legislature in 37 years. This combination resulted in the first time the Republican Party has obtained control of both legislative bodies and the governor's office at the same time in 44 years. Whether you are excited or horrified by this news it is

an historic time in Maine politics. This significant change has people in the environmental industries, related fields and special interests uneasy because the State of Maine is in a position where seemingly strict environmental regulation is thought to be somewhat responsible for a lack of industry and jobs. The new governor and legislators made comments during the campaign that they would look into relaxing some regulations; and they are now in the position to act on these claims. A major part of the LC tasks this year will be to closely follow the legislature and be proactive about getting the word out to the membership regarding changes in regulations. So, what has been going on recently of interest?

- The DEP has been working on proposed changes to stream crossings: NRPA Section 480 Q and PBR Chapter 305 Section 10. No consensus came out of stakeholders though the majority didn't support a compromise measure. Instead, most supported holding back on rules and going forward with an Aquatic Resource Conservation Plan: there are 2 different grant applications in to accomplish this, one with NOAA and the other with Federal Highway.
- Proposed changes to Site Law; Chapters 371-380. Currently these are on hold
- Proposed changes to Stormwater Management Law; Chapters 500 & 502. Currently these are on hold. (con't next page)

## Ranaway, Ranaway



Sketches by Rich Jordan, Text by Danielle Dyer

- Proposed changes to Chapter 1000, Guidelines for Municipal Shoreland Zoning Ordinances, Amendment of Section 13(A)(1). This was amended last on November 22, 2010.
- The 125<sup>th</sup> Maine Legislature first regular session convened on 12/1/2010 and the statutory adjourned is scheduled for 6/15/2011.
- In the beginning of January MAWS sent a letter to Governor LePage to let him know who we are, what we do and asked to be involved in the rulemaking process in a proactive manner (posted on the MAWS website).
- In the beginning of January MAWS sent a letter to the co-chairs of the Environment and Natural Resources Committee to let them know who we are, what we do and asked to be involved in the legislative process in a proactive manner (posted on the MAWS website).
- The Governor and the Natural Resources Council of Maine (NRCM) sponsored an “Environmental

Roundtable” to discuss how changes to environmental rules could affect business in Maine (see my notes posted on the MAWS website).

- Mr. Darryl Brown was confirmed as the new DEP Commissioner (Congratulations Darryl!).
- The Governor’s office sent out a list of proposed regulatory reforms. Many of these are related to the DEP and environment (emailed a copy to the membership January 26<sup>th</sup>).

Things are moving pretty fast right now, so by the time this article is printed and sent to the membership some of the information may be out dated. I will attempt to keep the membership up to date with the membership email list (sign up if are not already, it is a great resource). This is going to be a very busy few years staying on top of all of these issues. If anyone has interest in being a member of the MAWS LC please contact me.

Rodney Kelshaw, Legislative Subcommittee Chair  
 Email: [rkelshaw@boyleassociates.net](mailto:rkelshaw@boyleassociates.net)  
 Phone: (207) 944-6776




---

**DON'T FORGET TO LOG ON TO [WWW.MAINEWETLANDS.ORG](http://WWW.MAINEWETLANDS.ORG) AND SIGN UP FOR THE MAWS EMAIL LIST**  
 Receive workshop and regulatory updates from the comfort of your inbox! Also, start or add to an ongoing online discussion group. Find us on [www.facebook.com/MAWS.org](http://WWW.FACEBOOK.COM/MAWS.ORG)

---

### Membership Update

by Danielle Dyer

**G**reetings MAWS Members! For once you're not seeing that because you need to pay dues (unless you haven't paid your dues for 2011 yet, in which case: !!). As you no doubt read in Dale's outgoing message a page or two back, we gained 19 members this year! That's unprecedented growth, numbers of which I haven't seen since 1991. Of course, I wasn't a member in 1991 but I think that was the first era in which I wanted to be an environmentalist. The reason I'm so familiar with the huge growth of 1991 is one task I've taken on this year is to scan the membership files into pdf files. Anyone interested in the hard copy of their original MAWS application should contact me and I'd love to send it back to you! It's been a great task to see how the membership has evolved over the years, seeing where you all started and where you are now. It also made me realize we let our 20<sup>th</sup> anniversary come and go with little more than mention! In honor of our 21<sup>st</sup>

anniversary as an organization we should give a few hurrahs at the meeting in March; we're legal now ☺ I pledge to do a better job of updating our Facebook page in 2011, but please feel free to post pictures, "friend" MAWS and share some lively discussion. If anyone knows the whereabouts of the following missing members, please let me know!  
[danielle.dyer@stantec.com](mailto:danielle.dyer@stantec.com)

- Mark Lickus**
- Steven Linnell**
- Becky Maddox**
- Scott Norman**
- Terry Ramborger**
- Patricia Rouleau**
- Norman Scott**
- Jennifer Spiers**
- Jeremy Waddell**

We had a great year in 2010 despite the circumstances. Congratulations for making it. We're truly glad you're still with us and we can't wait to see what 2011 brings.



## Ethics Chair Update

by, Laura Lapierre

**A**s stated in the MAWS constitution, the organization has committed to “Supporting and contributing to the expansion of the wetland science research base”. MAWS remains committed by funding college and university student research relating to Maine wetlands. Each year in March the Ethics Chair sends the Maine wetlands research stipend applications to 30 professors in Maine colleges and universities which have been known to research wetlands. The submitted applications are then reviewed by the Executive Committee and students may be awarded up to \$1000. At the annual meeting, stipend holders present the results or progress of their research. The 2010 stipend winner was Sasha Greenspan, a Master’s candidate at the University of Maine Orono. Ms. Greenspan is in her final year of research on the infection and transmission of the aquatic chytrid fungus, *Batrachochytrium dendrobatidis*, which infects amphibians and is

contributing to their global decline. She has focused her research on comparing the response of the fungus within two separate host species, the wood frog and bull frog. Ms. Greenspan’s research also asks whether the fungus-resistant bull frog transmits the fungus to wood frogs in Maine vernal pool ecosystems.

I am happy to report that our 2006 and 2009 stipend winner, Amanda Shearin is defending her thesis on amphibian communities in historically fishless lakes this coming July. At the annual meeting, Ms. Shearin will present one of her recent papers on improving amphibian audio surveys and will conclude her five years of fishless lakes research.

This year I have expanded our application mailing list. I am also sending out applications over a month earlier than previous years in hopes to attract more applicants. If you know of any professors that should be added to the mailing list, please contact me at [llapierre@normandean.com](mailto:llapierre@normandean.com). 

## From the Program Chair

by Sarah Watts

**A**fter a very slow start since taking over the Program Chair role in March 2010, and trying to fill long-standing former PC Jennifer West’s shoes, I am finally hitting my stride! We are putting together a great program for the MAWS Winter Conference and Annual Meeting, to be held on Thursday, March 24, 2011, at the marvelous and consistent Maple Hill Farm B&B. Our focus this year is on the Past, Present, and Future of Land Use Development in Maine, and in addition to a suite of speakers, we can look forward to hearing from the 2010-11 stipend winner and two past stipend winners on the results of the good work they are doing! We have put together a conference program that we hope will provide an interesting look at the history of land use in Maine through time, from historical land use, to current development and regulatory updates, and to the future image of land use in Maine including wind development. Please see the enclosed agenda for more detail.

In September, MAWS co-sponsored the 2010 Cool Climate Soil, Hydrology, and Site Evaluator Soil Pit Classification Workshop, held on September 1 at Saddleback Mountain Ski Resort. The intensive set-up and yearlong ground water monitoring in preparation for this workshop gave attendees a chance to test their skills

in identifying soils with oxyaquic (oxygen rich) conditions, groundwater seeps, stone-filled subsurface channels, and boulder fields that have upland tree species growing in the organic duff layer on top of the boulders but where water stands or flows between the boulders. Holy smokes! Talk about challenging soil conditions, but these are what we frequently face delineating wetlands in the mountains of Maine! Dave Rocque led the afternoon discussion and reveal of what the regulators think and what calls they would make in these challenging conditions. Thanks to MAPSS for spearheading this workshop!

Many MAWS members, affiliates, and friends attended the Vernal Pool Roundtable Workshop (Part 2), held on December 8 at the Augusta Elks Lodge. The focus of this workshop was to continue the ongoing conversation with state and federal regulators providing updates of the current status of the science and regulations regarding vernal pools, to elucidate unclear aspects of the regulations, and to work towards standardizing field data collection protocols. This workshop had participation from a Regulators Panel, including Dr. Phillip deMaynadier and Jason Czapiga (MDIFW), Wende Mahaney (USFWS), Mike Mullen (MDEP), Jay Clement (USACE), Marcia Spencer-Famous (LURC), and Mark Kern (EPA), and others. Thanks to Rod Kelshaw, Rich Jordan, and Dale Knapp for co-MC’ing this event! (con’t next page)

I am also working on putting together a number of workshops this year, including a workshop presented by Arthur Haines, Delta Institute (topic TBD), and a workshop presented by Matt Arsenaault, Stantec on the ever-difficult-to-identify sedges. Both of these workshops are anticipated to be held sometime late winter/early spring. In addition, I'm in the process of putting together a panel workshop with USACE and The Nature Conservancy on Maine's In-Lieu

Fee Program (date TBD). Lastly, I am investigating opportunities to conduct a joint workshop sometime this summer with the Friends of Scarborough Marsh, USFWS, and the Society for Ecological Restoration – New England Chapter, and the Ecological Landscaping Association to visit and discuss the status of several salt marsh restoration projects in Scarborough Marsh. There are a lot of great ideas in the works, and I look forward to a great series of workshops and events in 2011! 🍁

**If anyone would like to assist in organizing workshops and activities for MAWS, please contact Program Chair, Sarah Watts ([sarah.watts@tetrattech.com](mailto:sarah.watts@tetrattech.com)) or (207) 879-9496. She could use your help! 😊**

### Incoming President's Message

by Jeff Simmons

**G**reetings colleagues and friends! I am really looking forward to serving you, the membership, in advancing the mission of MAWS. Before outlining my goals for MAWS over the next two years, I would like to start by saying "Thank You" to Dale Knapp for his energetic leadership during his tenure as President. Dale took over the Presidency and led the Executive Committee (EC) and MAWS as a whole, through a series of complex (and often controversial) issues and challenges over the last few years. He has always shown a willingness to hear more than one point of view when discussing an issue, and provided clear direction to the EC and the organization when it was needed. Through Dale's leadership and vision, along with the efforts of many others on the EC, MAWS increased its visibility and involvement within the regulatory and legislative communities. This was a major goal of Dale's when he first took office, and was instrumental in enhancing the visibility of our organization throughout Maine, and in adjacent states. This greater visibility, was at least partially responsible for the increase in membership last year. In fact, our records indicate that MAWS increased its membership by just under 20% in 2010. This is a pretty remarkable accomplishment given these difficult financial times. I know that many organizations like ours have been struggling with membership retention, and maintaining positive cash flow over the last couple of years. For these accomplishments, and the many other things that have gone on behind the scenes over the last 2 years, please join me in thanking Dale.

As we head into 2011, I have a number of goals I would like our organization to achieve over the next two years. Most of these goals represent a continuation of the policies of the past, although in some cases with a renewed urgency. Each of these initiatives is described in the bullets below.

- ***Continue with an increased level of involvement in legislative and technical issues relevant to our profession.*** Over the last couple of years, MAWS has been more active on several fronts related to legislative issues, and the development of technical guidance regarding data collection for vernal pools. This activity has been particularly intense over the last couple of months, as the EC has had its hands full just keeping pace with potential rule changes that may result from the Governor's Phase I Regulatory Reforms. MAWS has an opportunity to provide insightful input regarding the science behind the rules, common sense resource protection, and our real world experiences dealing with permitting and projects statewide. Our involvement in the process of reviewing the rules will need to be responsive and prolonged, as it appears as if the movement to change the regulations is moving at an accelerated rate, but that the amount of time it takes to get regulatory changes through the legislative process can be very long. The EC will keep the MAWS membership up to date on developments, and we encourage all who are interested to participate in the process.
- ***Review and reassess the path forward for the wetland scientist certification process.*** As we all know, the establishment of a certification program has been an ongoing and controversial undertaking for MAWS over the last several years. Working with MDEP staff, the beginnings of a certification program (con't next page)

in Maine seemed to be well underway, as recently as last summer. However, given the change in leadership in Augusta, the path forward on this program has become less certain. As we all know, the new Governor, and many newly elected legislators ran for office on a platform of reducing the size and costs of State government, and streamlining or revising rules and regulations, particularly those associated with environmental issues. With this new focus on smaller government and less regulation, the appetite for establishing any new program, including a wetland scientist certification program in ME, has to be considered to be in question. Going forward, MAWS will need to revisit this program with MDEP staff, to determine how it fits into the Department's new priorities.

- **Provide regular, relevant, and interesting educational opportunities.** Education has always been a primary function of MAWS. Through workshops, seminars, and lectures, the MAWS membership has been able to keep up with the latest advances in science, changes in rules and regulations, and field methods/protocols applicable to the field of wetland science. Continuing to offer abundant educational opportunities going forward will continue to be particularly important for those of us who are NH-certified wetland scientists, and need CEUs for recertification. Going forward, I would like to see educational opportunities offered on at least a quarterly basis, and where possible, to collaborate with MAPSS, MASE, our many Maine universities and colleges, and

the NH Association of Natural Resource Scientists. This will provide opportunities to meet with other professionals involved in related organizations and disciplines, while also staying on top of what is new in our field.

- **Increase involvement by the membership.** It is no secret that the success of any volunteer-based organization, including MAWS, is dependent on the involvement of the membership. There are lots of tasks that need to be accomplished for MAWS to be a successful and vibrant organization. To that end, the EC will strive to develop new strategies to increase involvement of the membership in the daily operations of the organization. I encourage all of you to find some role in MAWS that will interest you, and that fits into your schedule. Run for one of the EC positions help out organizing a workshop, or offer support to the legislative committee. Any support will be greatly appreciated. As we all know, many hands really does make for light work!

Hopefully this provides you all with some idea of the general direction and priorities for the EC over the next 1-2 years. I appreciate the trust that you have placed in me as your newest President, and hope that I can provide the same level of leadership as Dale and the many others that have preceded me in this office. I look forward to seeing you at the annual meeting next month, and wish you all a happy, healthy, and prosperous 2011!

**DON'T FORGET TO LOG ON TO [WWW.MAINEWETLANDS.ORG](http://WWW.MAINEWETLANDS.ORG) AND SIGN UP FOR THE MAWS EMAIL LIST**


**Receive workshop and regulatory updates from the comfort of your inbox! Also, start or add to an ongoing online discussion group. Find us on [WWW.FACEBOOK.COM/MAWS.ORG](http://WWW.FACEBOOK.COM/MAWS.ORG)**



## Vernal Pool Technical Committee (VPTC) Update

by Richard Jordan

The VPTC was formed late in 2009 to devise a set of standards for performing vernal pool surveys in Maine. We released the MAWS Interim Draft Vernal Pool Monitoring Protocol at the 2010 Annual Meeting requesting that MAWS members try it out and provide comments or suggestions to the VPTC. Following the field season, the VPTC reconvened and made some minor edits to the document. We met with Mike Mullen of MDEP and Phillip DeMaynadier and Don Katnik of MDIF&W, and discussed our proposed revisions. At this meeting we agreed to eliminate the MAWS vernal pool data collection form to have one common data form. This streamlines processing for the state; increases reproducibility of the data collected by vernal pool monitors and makes the type and quality of collected data more consistent. The MAWS EC and VPTC then arranged a vernal pool roundtable workshop in December 2010. This was a follow-up meeting to the first vernal pool roundtable discussion held by MAWS in the spring of 2009. At the December meeting, representatives from MDIF&W, MDEP, the US Army Corps, the EPA, and LURC attended. In addition to an open forum and a question and answer session, we

discussed several of the proposed and ongoing changes to the protocol. This clarified our definitions of terms, but still left us with a healthy workload in order to complete the protocol updates. As of this writing, the VPTC is continuing its efforts to complete the draft protocol for the 2011 field season. We will have draft copies ready for field use at or by the Annual Meeting. As you know, at the state level there are several potential changes to Chapter 335 (and others). Because of the potential changes, the protocol will remain in "draft" form this season (the federal rules section of the protocol is based on the 2010 GP and will therefore remain fixed until the GP expires or is revoked). MAWS is encouraging members to follow the guidelines in the protocol to the best of their ability regardless of regulation changes. The fieldwork standards of practice, the helpful decision tree (Appendix A, see page 13) and many of the definitions were formulated based on the combined experiences, knowledge and research of a large group of natural resource scientists and biologists. While there is still work to be completed, the MAWS vernal pool survey protocol is currently the best tool we have to ensure consistency in vernal pool surveys. 

### MAWS Financial Statement – FY 2011 (For period of February 17, 2010 – February 10, 2011)

*Respectfully Submitted to MAWS Membership, 10 February 2011, by Kathleen Miller, Treasurer*

	Balance 02.16.2010	<b>\$6,628.59</b>
	Balance 02.10.2011	<b>\$5,326.12</b>
<b>INCOME</b>		
	2010 Annual Meeting	\$2,685
	Workshops (VP Roundtable II)	\$1,500
	Membership Dues	\$2,220
	<b>TOTAL INCOME:</b>	<b>\$6,405</b>
<b>EXPENDITURES</b>		
	2010 Annual Meeting	\$3,535.62
	Envirothon Grant	\$1,000.00
	Student Research Grant	\$1,000.00
	Workshop Expenses (Elks Lodge 12/2010 and Delta Institute 3/2010)	\$1,645.88
	Postage and Copying (includes workshops and <i>Obligate</i> )	\$439.36
	Other (bank fees)	\$86.61
	<b>TOTAL EXPENDITURES:</b>	<b>\$7,707.47</b>

Maine Association of Wetland Scientists

**Business Meeting Agenda**

March 24, 2011

4:00 – 5:00 p.m.

**1. Executive Board update**

**2. Election**

Executive Committee: Underlined positions will be elected at the 2009 annual meeting. Nominations will also be accepted from the floor:

- President: Jeff Simmons (tenure expires in 2013)
- President Elect: Nominated – Rich Jordan (to become President in 2013)
- Secretary: currently interim and nominated for an official term – Steve Knapp
- Treasurer: Tim Forrester
- Ethics – Laura Lapierre (tenure expires 2012)

- Legislative Chair: Rodney Kelshaw nominated for a second term (tenure to expire 2013)
- Membership Chair – Danielle Dyer (tenure expires 2012)
- Program Chair – Sarah Watts (tenure expires 2012)

**3. Updates from the Sub-Committees:**

VPTC: Rich Jordan, Dale Knapp,

Certification: Jim Boyle, Dale Knapp

**4. Vote on Stipend Award amount**

**5. Vote on Envirothon donation amount**

**6. Vote on changes to the membership application (see attached)**

**7. Vote on changes to the MAWS Constitution (See below on this page—text underlined and italicized)**

\*\*\*\*\*

*Note: Members attending the annual meeting are expected to receive an additional 2CEU's from the NH Joint Board.*

*(Excerpt from the MAWS constitution proposed changes italicized)*

**Article III**

Membership:

Section A - Active Members

- Item 1. Must have practiced the profession of wetland science for at least 2 years (full time equivalent) and must possess a Baccalaureate degree with a minimum of 30 semester hours in multiple scientific disciplines such as ecology, biology, zoology, botany, forestry, pedology, hydrology, geology, and chemistry or be certified in wetland science at the state or federal level (Amended 3/4/05). All applicants for active membership must be approved by the Membership Committee.
- Item 2. After December 31, 1990, only those members approved by the Membership Committee will be eligible to vote. Prospective members applying for active membership after December 31, 1990 must provide references from two professionals active in the field of wetland science. (NOTE: these references need not be members of MAWS.)
- Item 3. Active Members have voting privileges.
- Item 4. Only Active Members may serve on the Executive Committee or Chair standing committees.

Section B - Affiliate Members

- Item 1. Open to any person with an interest in wetland science.
- Item 2. Do not have voting privileges.
- Item 3. May be appointed to committees.

Section C – Student Members

- Item 1. Open to any student pursuing a bachelor, master or doctorate degree in any environmental or scientific discipline.
- Item 2. Do not have voting privileges.
- Item 3. Valid for a maximum of 5 years after which membership will be changed to the Affiliate membership level (see Section B, Affiliate membership dues apply) unless the member submits an application to upgrade to Active membership.
- Item 4. Must provide proof of student status (any of the following may be used: copy of current student ID, copy of a transcript or the last semester's grade report or a letter of recommendation from the applicant's academic advisor) and provide an academic reference on the application.
- Item 5. May participate with MAWS sub-committees.



## Maine Association of Wetland Scientists DRAFT Membership Application

### Membership Category

- Requirements for Active Membership (\$25.00 annually)  
Must have practiced the profession of wetland science for at least 2 years (full time equivalent is approximately 100 weeks) and must possess a Baccalaureate degree with a minimum of 30 semester hours (credits) in multiple scientific disciplines such as ecology, biology, zoology, botany, pedology, hydrology, geology, and chemistry. A three credit class is equivalent to three hours of course time for a full college semester (of 16 weeks) for a total of 48 hours of course time. Therefore, each semester hour (credit) is equivalent to 16 hours of course work in an accredited degree program. If an applicant would like to use CEUs to meet the course work requirement, the burden of proof would be on the applicant to demonstrate content would be considered equivalent to an accredited college class and the number of hours of class time represented by each CEU. Otherwise, please feel free to list the CEUs earned from workshops under Professional Experience on this application.  
All applicants for active membership must be approved by the Membership Committee. Active Members have voting privileges. Only Active Members may serve on the Executive Committee or Chair standing committees.
- Requirements for Affiliate Membership (\$15.00 annually)  
Open to any person with an interest in wetland science. Do not have voting privileges. Affiliate Members may be appointed to committees.
- Requirements for Student Membership (\$10.00 annually)  
Open to college students pursuing a Baccalaureate, Master's or Doctorate degree in a wetland-related field. Applicant must provide the name of an advisor and a copy of a transcript or college ID as proof of student status.

### Contact Information

A physical address is required

Please indicate the preferred format to receive MAWS mailings (like the newsletter)

### Education

A) Please provide all required information

B) Complete information is required. Applicants for Affiliate membership need not provide detailed coursework information but may choose to in preparation for a membership type upgrade in the future.

### Professional Experience

If attaching a resume or CV please indicate as such on this application and make sure everything required is included in your information.

Workshops for which you have received CEUs should be listed here rather than under education.

### Employment Experience

- Please list at least 2 years (or the full-time equivalent i.e. 24 months) of professional work related to wetland science. The column asking for time spent on wetland related tasks should be given as a percentage of your primary duties.
- If you are lacking the 2 years of professional experience or the 30 credit hours of education required for Active Membership, please provide a narrative describing your experience and why this qualifies you for Active membership.
- An advanced degree in a wetland related area may be substituted for up to one year of experience.

### References

References need not be members of MAWS. Please provide complete contact information.

I HEREBY ATTEST THAT THE INFORMATION CONTAINED IN THIS APPLICATION IS TRUE

PRINTED NAME: \_\_\_\_\_

SIGNATURE: \_\_\_\_\_ DATE: \_\_\_\_\_

PLEASE RETURN YOUR APPLICATION, ALONG WITH THE APPROPRIATE MEMBERSHIP DUES:

\$25.00 FOR ACTIVE AND UPGRADE

\$15.00 FOR AFFILIATE

\$10.00 FOR STUDENT

Make checks payable to *MAWS* and send to:

**MAWS Membership**

**PO BOX 361**

**Augusta, ME**

**04330**

**MAINE ASSOCIATION OF WETLAND SCIENTISTS DRAFT MEMBERSHIP APPLICATION (01/2011)**

Pending approval at the March 24, 2011 Business Meeting

APPLICATION DATE: \_\_\_\_/\_\_\_\_/20\_\_\_\_

**NAME (required):**

FIRST NAME	LAST NAME	M.I.	TITLE(S)

**MEMBERSHIP CATEGORY:**

ACTIVE  AFFILIATE  STUDENT  CURRENT AFFILIATE UPGRADE

**CONTACT INFORMATION: \*indicates a required field**

BUSINESS/ORGANIZATION NAME (IF APPLICABLE)			
*STREET/ PO BOX #	*CITY/ TOWN	*STATE	*ZIP CODE
*BUSINESS PHONE #	HOME/CELL #	EMAIL ADDRESS	

Home Address  Business Address  Address Update  I prefer correspondence via email

**EDUCATION: \*indicates a required field**

A) Please list colleges attended & degrees obtained; include dates

<i>COLLEGE(S) ATTENDED AND/OR DEGREE EARNED</i>	<i>DATE</i>

B) Please list 10 or more wetland related courses (the total number of semester hours must be 30 or greater for active membership consideration)

<i>COURSE NAME</i>	<i>HOURS</i>	<i>COURSE NAME</i>	<i>HOURS</i>

**PROFESSIONAL EXPERIENCE**

Please list any State or Federal level wetland-related certifications or licenses (e.g. PWS, LSE, PSS, CWS, etc.). Also, please list special training, publications or knowledge that might assist the Membership Committee.

---

---

---

---

---

**EMPLOYMENT EXPERIENCE**

Experience related to wetlands: please list place(s) of employment, dates, type of work, and percent of time worked in wetlands or wetland related areas. Active membership requires a minimum of two years of full time employment in wetland science\*.

<i>EMPLOYER</i>	<i>TITLE</i>	<i>PRIMARY DUTIES</i>	<i>TIME SPENT ON WETLAND-RELATED TASKS</i>	<i>DATES OF EMPLOYMENT</i>

\*An advanced degree in a wetland related area may be substituted for up to one year of experience. Please provide specifics. Individuals who do not meet the minimum requirements of education and experience but would still like to apply for active membership may use this space to provide a narrative describing education and special experience that may qualify you for membership.

---

---

---

---

---

---

---

---

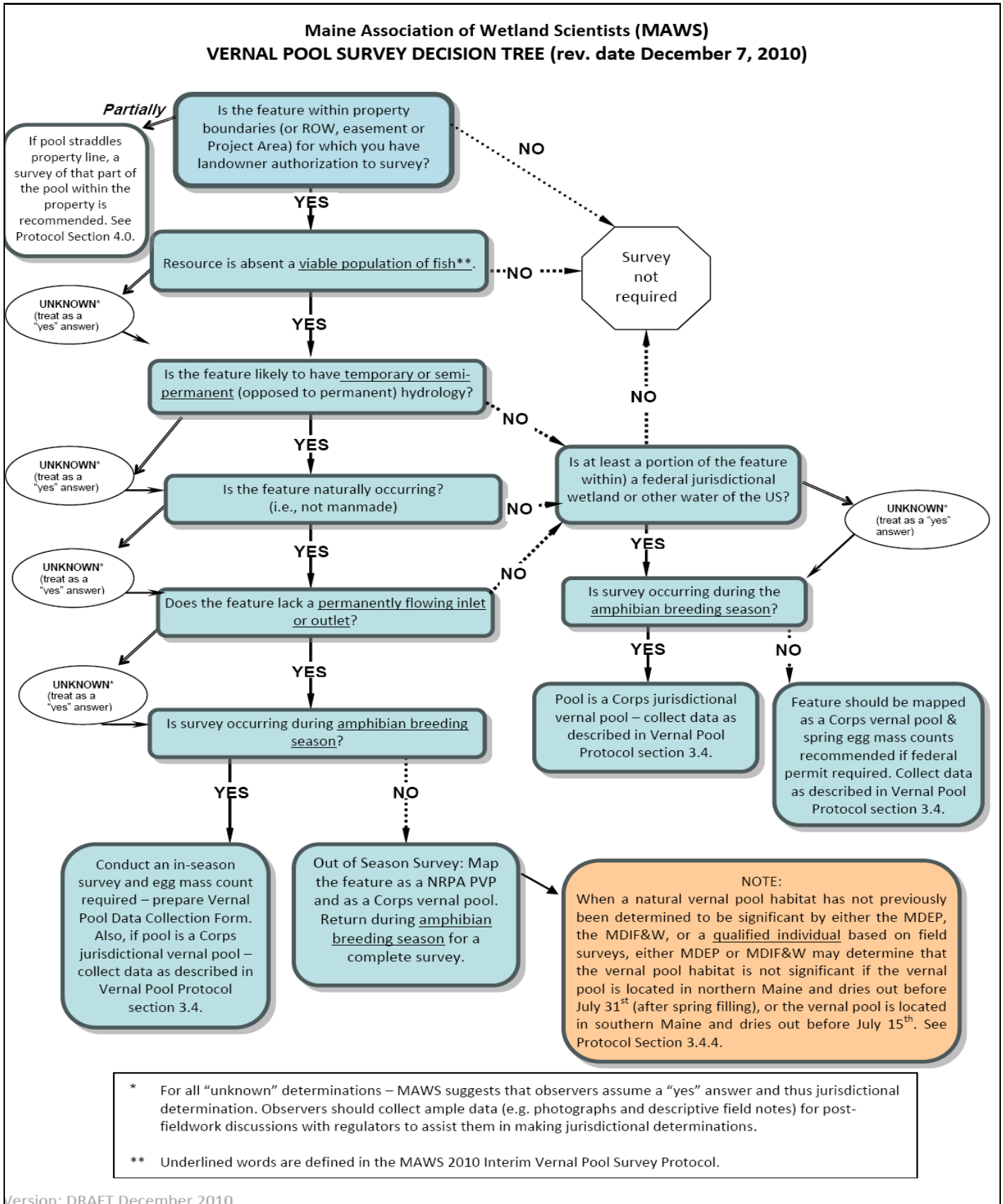
---

---

**REFERENCES**

Please list at least two professionals who have experience in wetland science and are familiar with your work. Please include addresses and telephone numbers, email addresses or attach letters of reference.

<i>NAME</i>	<i>POSITION, TITLE</i>	<i>PHONE NUMBER OR EMAIL ADDRESS</i>



**Maine Association of Wetland Scientists  
Winter Conference & Annual Meeting  
Thursday, March 24, 2011  
Maple Hill Farm B&B, 11 Inn Road,  
Hallowell, ME**

The Maine Association of Wetland Scientists will be holding its annual meeting at Maple Hill Farm in Hallowell. For directions go to <http://www.maplebb.com/>. Registration for MAWS members is \$40 (not including annual dues); for non-members \$45, and for students \$20. Members, please take this opportunity to continue your support of MAWS by paying your annual dues. **Please complete the attached registration form and return to MAWS no later than March 15th.**

**PAST, PRESENT, AND FUTURE OF LAND USE DEVELOPMENT  
AGENDA - DRAFT**

- 8:00 – 8:30      **Registration**
- 8:30 – 8:45      **Welcome, Introduction of Speakers**
- 8:45 – 9:45      **Floristic Quality Index (FQI)**, Andy Cutko, MNAP. *FQI is a standardized tool that can be used for wetland assessment, including site assessment of wetland floristic quality and for long-term site monitoring. Floristic quality of a site is measured by the aggregate conservatism of all plants present.*
- 9:45 – 10:05     **Ecological implications of the invader *Myriophyllum heterophyllum* on Maine lakes**, Jacolyn Bailey, University of Maine, Orono, MAWS 2008 Stipend Winner
- 10:0 – 10:25     **Break**
- 10:25 – 10:45    **Frogloggers and Fish: Five Years of Amphibian Research in Maine's Fishless Lakes**, Amanda Shearin, University of Maine at Orono, MAWS 2009 Stipend Winner
- 10:45 – 11:05    **Infection and transmission of a fungal pathogen in bull frogs and wood frogs**, Sasha Greenspan, University of Maine at Orono, MAWS 2010 Stipend Winner
- 11:05 – 12:05    **The Future of Maine DEP**, Darryl Brown (or his designee), Current Maine Department of Environmental Protection Commissioner
- 12:05 – 1:05     **Lunch**
- 1:05 – 1:50      **Programmatic General Permit Updates**, Jay Clement or Peter Tischbein, U.S. Army Corps of Engineers
- 1:50 – 2:35      **High Elevation Soils, Hydrology and Wetlands: Wise Use and Management of Maine's Natural Resources**, David Rocque, Maine State Soil Scientist
- 2:35 – 3:20      **Speaker TBD**
- 3:20 – 3:40      **Break**
- 3:40 – 5:00      **Annual business meeting** – See page 8

We are pursuing CEU's from the NH Board of Natural Scientists for Wetland Scientists and Soil Scientists attending the conference, and members attending the conference and annual meeting. If you have any questions, contact MAWS Program Chair, Sarah Watts @ (207) 879-9496, or by email [sarah.watts@tetrattech.com](mailto:sarah.watts@tetrattech.com).

**Maine Association of Wetland Scientists  
Winter Conference & Annual Meeting  
Thursday, March 24, 2011  
Maple Hill Farm B&B, 11 Inn Road,  
Hallowell, ME**

**REGISTRATION FOR MAWS WINTER CONFERENCE & ANNUAL MEETING**

Please mail registration form and payment to: MAWS c/o Sarah Watts, Program Chair, 451 Presumpscot Street, Portland, ME 04103, Phone: (207) 879-9496 , email: [sarah.watts@tetrattech.com](mailto:sarah.watts@tetrattech.com).

Registration and check should be received no later than March 15, 2011. Make checks payable to MAWS.

Name: \_\_\_\_\_ Affiliation: \_\_\_\_\_

Address: \_\_\_\_\_ City/State: \_\_\_\_\_

Telephone and/or e-mail address: \_\_\_\_\_

**Registration fee**, which includes food and facility charges:

MAWS member:	\$40*	_____
non-members:	\$45	_____
student:	\$20**	_____

\*2011 Dues must be paid in full to receive membership rate for this event.

*Membership runs from January 1 to December 31. If you have questions about your status please email [danielle.dyer@stantec.com](mailto:danielle.dyer@stantec.com)*

\*\* Proof of student status must be provided with registration.

**I would like to apply for membership, a completed application is included with my registration**

**Current MAWS Members Annual Dues:**

Active:	\$25	_____
Affiliate:	\$15	_____
Student:	\$10	_____
 Total Payment:		_____

We anticipate that the NH Board of Natural Scientists will award **1 CEU** Credits for Wetland Scientists and **1 CEU** credit to Soil Scientists for attendance at the conference. Members attending the annual business meeting will receive an additional **2 CEU's**.

**Please indicate if you need a certificate of attendance (circle one):**      **Yes**      **No**

No Refunds for Cancellations